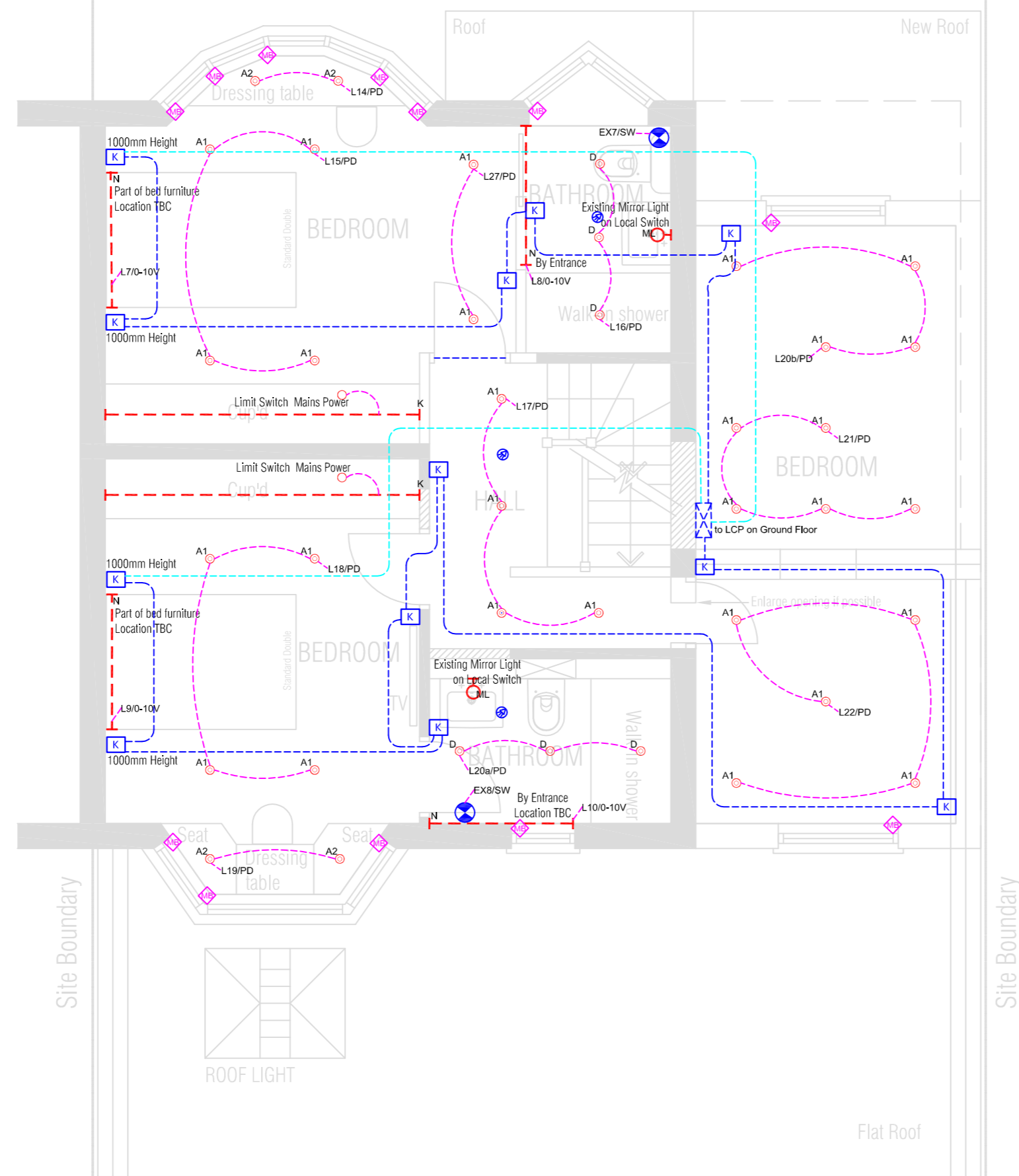


CAT6 to Network Switch
CAT6 to Alarm Panel

LIGHTING CONTROL LEGEND:		LIGHTING LEGEND:	
	Lutron SeeTouch Int. Keypad, Mounting Height: 1200mm from top to FFL Backbox: 1-gang 3x3 BS standard Cable: Lutron cable - 4 core (1 pair 18AWG Power/22AWG Data link) - follow pathway shown on layout		Single LED Downlight (Plaster), 7W GU10 240V Phase Dimmable
	Ceiling Flush Mounted PIR Motion Sensor - model TBC Ceiling Cut-out: TBC based on model Cable: Lutron cable home run to each floor LCP		Double LED Downlight (Plaster), 2x 7W GU10 240V Phase Dimmable
	Wall Mounted Outdoor PIR Motion Sensor - model TBC Backbox: TBC based on model Cable: Lutron cable - 4 core (1 pair 18AWG Power/22AWG Data link) home run to Ground Floor LCP		Fixed LED Downlight, 7W GU10 240V Phase Dimmable
	Lutron Sivoia QS Motorise Blind Cable: Lutron cable - 4 core (1 pair 16AWG Power/22AWG Data link) home run to Ground Floor Sivoia QSPS Panel		Fixed LED Downlight IP65, 5.5W GU10 240V Phase Dimmable
	Magnetic Open/Close Contact Sensor model TBC Cable: Lutron cable - 4 core (1 pair 16AWG Power/22AWG Data link) home-run to Ground Floor LCP		Single LED Downlight, 5.5W GU10 240V Phase Dimmable
	Lighting Control Panel (LCP) Future Automation LCP5 DIN-Rail Type, 5-Row Dimensions: H900xW690xD141.5mm Mounting Height: TBC on-site Power Req.: 32A/3P		Single LED Downlight, 5.5W GU10 240V Phase Dimmable
	QSPS-P2-10-60 Motorised Blind Control Panel Mounting Height: TBC on-site Dimensions: H464xW262xD99mm Power Req.: 4A/1P		Up/Down LED Wall Light 7W GU10 240V Phase Dimmable
	Lutron Cable - 4 core (1 pair 18AWG Power/22AWG Data link)		Low Level LED Wall Light 1W 350mA Driver Phase Dimmable
	Lutron Cable - 4 core (1 pair 18AWG Power/22AWG Data link) Not Connected (spare for redundancy)		Single LED Downlight, 5.5W GU10 240V Phase Dimmable
	Power Cable		Existing Mirror Light Local Switch (Not on LCS)
NOTES: All cables need to run away from 230V power cables and must be in a separate containment. Minimum conduit size Ø20mm. Leave 0.5m cable slack coming out of each point, and 5m cable slack at the rack or panel. Drawings are intended for lighting fixtures installation and lighting control systems installations only. Do not scale from this drawing. PD: Phase Dimmable 0-10V: Analogue 0-10V Dimmable (requires extra 2-core control cable) SW: Switched On/Off			Floodlight LED, Wall-mounted, 20W 240V Switched
			Spike Lights, Existing TBC Switched
			LED Strip Light (Recessed Profile) 9.6W/m 24V, 0-10V Dimmable
			Cupboard Light - Carpenter Works, 4.8W/m 12V, Control by Cupboard Switch
			5ft LED Luminaire non-corrosive, 36W LED Integral 240V, Switched
			Extractor Fan Switched
		Rev 3: As-fitted	
		Rev 2: Changes after programmer comments	
		Rev 1: First Draft	
		 The smarter choice	
Project: Alperton Residence			
Title: Lighting Control System (LCS) GROUND FLOOR			
Rev: 3	Designed By: DW	Project #: 109	
Scale: 1:50 - A2	Date: 31/08/17	No.: 1	



LIGHTING CONTROL LEGEND:

- Lutron SeeTouch Int. Keypad,
Mounting Height:
1200mm from top to FFL
Backbox: 1-gang 3x3 BS standard
Cable: Lutron cable - 4 core (1 pair
18AWG Power/22AWG Data link) -
follow pathway shown on layout
- Ceiling Flush Mounted PIR Motion
Sensor - model TBC

Ceiling Cut-out: TBC based on model
Cable: Lutron cable home run to
each floor LCP
- Wall Mounted Outdoor PIR Motion
Sensor - model TBC

Backbox: TBC based on model
Cable: Lutron cable - 4 core (1 pair
18AWG Power/22AWG Data link)
home run to Ground Floor LCP
- Lutron Sivoia QS Motorise Blind

Cable: Lutron cable - 4 core (1 pair
16AWG Power/22AWG Data link)
home run to Ground Floor Sivoia
QSPS Panel
- Magnetic Open/Close Contact Sensor
model TBC

Cable: Lutron cable - 4 core (1 pair
16AWG Power/22AWG Data link)
home-run to Ground Floor LCP
- Lighting Control Panel (LCP)
Future Automation LCP5
DIN-Rail Type, 5-Row
Dimensions: H900xW690xD141.5mm
Mounting Height: TBC on-site
Power Req.: 32A/3P
- QSPS-P2-10-60
Motorised Blind Control Panel

Mounting Height: TBC on-site
Dimensions: H464xW262xD99mm
Power Req.: 4A/1P
- Lutron Cable - 4 core (1 pair 18AWG
Power/22AWG Data link)
- Lutron Cable - 4 core (1 pair 18AWG
Power/22AWG Data link)
Not Connected (spare for redundancy)
- Power Cable

LIGHTING LEGEND:

- Single LED Downlight (Plaster),
7W GU10 240V
Phase Dimmable
- Double LED Downlight (Plaster),
2x 7W GU10 240V
Phase Dimmable
- Fixed LED Downlight,
7W GU10 240V
Phase Dimmable
- Fixed LED Downlight IP65,
5.5W GU10 240V
Phase Dimmable
- Single LED Downlight,
5.5W GU10 240V
Phase Dimmable
- Single LED Downlight,
5.5W GU10 240V
Phase Dimmable
- Up/Down LED Wall Light
7W GU10 240V
Phase Dimmable
- Low Level LED Wall Light
1W 350mA Driver
Phase Dimmable
- Single LED Downlight,
5.5W GU10 240V
Phase Dimmable
- Existing Mirror Light
Local Switch (Not on LCS)
- Floodlight LED, Wall-mounted,
20W 240V
Switched
- Spike Lights, Existing TBC
Switched
- LED Strip Light (Recessed Profile)
9.6W/m 24V, 0-10V Dimmable
- Cupboard Light - Carpenter Works,
4.8W/m 12V, Control by Cupboard Switch
- 5ft LED Luminaire non-corrosive,
36W LED Integral 240V, Switched
- Extractor Fan
Switched


NOTES:
All cables need to run away from 230V power cables and must be in a separate containment. Minimum conduit size Ø20mm. Leave 0.5m cable slack coming out of each point, and 5m cable slack at the rack or panel.

Drawings are intended for lighting fixtures installation and lighting control systems installations only.

Do not scale from this drawing.

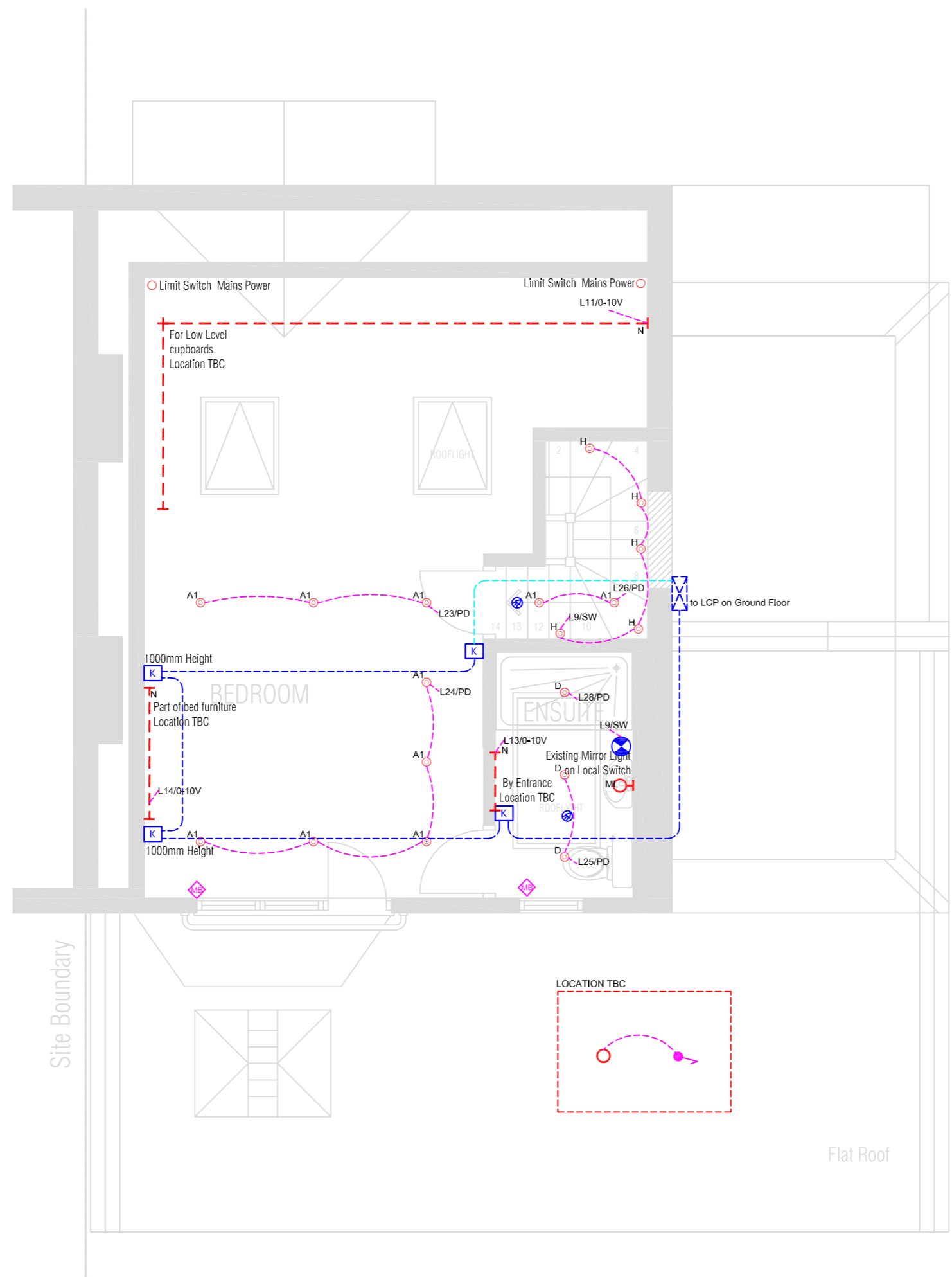
PD: Phase Dimmable
0-10V: Analogue 0-10V Dimmable (requires extra 2-core control cable)
SW: Switched On/Off

Rev 3: As-fitted
Rev 2: Changes after programmer comments
Rev 1: First Draft



The smarter choice

Project: Alperton Residence		
Title: Lighting Control System (LCS) FIRST FLOOR		
Rev: 3	Designed By: DW	Project #: 109
Scale: 1:50 - A2	Date: 26/08/17	No.: 2



LIGHTING CONTROL LEGEND:		LIGHTING LEGEND:	
	Lutron SeeTouch Int. Keypad, Mounting Height: 1200mm from top to FFL Backbox: 1-gang 3x3 BS standard Cable: Lutron cable - 4 core (1 pair 18AWG Power/22AWG Data link) - follow pathway shown on layout		Single LED Downlight (Plaster), 7W GU10 240V Phase Dimmable
	Ceiling Flush Mounted PIR Motion Sensor - model TBC Ceiling Cut-out: TBC based on model Cable: Lutron cable home run to each floor LCP		Double LED Downlight (Plaster), 2x 7W GU10 240V Phase Dimmable
	Wall Mounted Outdoor PIR Motion Sensor - model TBC Backbox: TBC based on model Cable: Lutron cable - 4 core (1 pair 18AWG Power/22AWG Data link) home run to Ground Floor LCP		Fixed LED Downlight, 7W GU10 240V Phase Dimmable
	Lutron Sivoia QS Motorise Blind Cable: Lutron cable - 4 core (1 pair 16AWG Power/22AWG Data link) home run to Ground Floor Sivoia QSPS Panel		Fixed LED Downlight IP65, 5.5W GU10 240V Phase Dimmable
	Magnetic Open/Close Contact Sensor model TBC Cable: Lutron cable - 4 core (1 pair 16AWG Power/22AWG Data link) home-run to Ground Floor LCP		Single LED Downlight, 5.5W GU10 240V Phase Dimmable
	Lighting Control Panel (LCP) Future Automation LCP5 DIN-Rail Type, 5-Row Dimensions: H900xW690xD141.5mm Mounting Height: TBC on-site Power Req.: 32A/3P		Single LED Downlight, 5.5W GU10 240V Phase Dimmable
	QSPS-P2-10-60 Motorised Blind Control Panel Mounting Height: TBC on-site Dimensions: H464xW262xD99mm Power Req.: 4A/1P		Up/Down LED Wall Light 7W GU10 240V Phase Dimmable
	Lutron Cable - 4 core (1 pair 18AWG Power/22AWG Data link)		Low Level LED Wall Light 1W 350mA Driver Phase Dimmable
	Lutron Cable - 4 core (1 pair 18AWG Power/22AWG Data link) Not Connected (spare for redundancy)		Single LED Downlight, 5.5W GU10 240V Phase Dimmable
	Power Cable		Existing Mirror Light Local Switch (Not on LCS)
NOTES: All cables need to run away from 230V power cables and must be in a separate containment. Minimum conduit size Ø20mm. Leave 0.5m cable slack coming out of each point, and 5m cable slack at the rack or panel. Drawings are intended for lighting fixtures installation and lighting control systems installations only. Do not scale from this drawing. PD: Phase Dimmable 0-10V: Analogue 0-10V Dimmable (requires extra 2-core control cable) SW: Switched On/Off			Floodlight LED, Wall-mounted, 20W 240V Switched
			LED Strip Light (Recessed Profile) 9.6W/m 24V, 0-10V Dimmable
			Cupboard Light - Carpenter Works, 4.8W/m 12V, Control by Cupboard Switch
			5ft LED Luminaire non-corrosive, 36W LED Integral 240V, Switched
			Extractor Fan Switched
			Rev 3: As-fitted
			Rev 2: Changes after programmer comments
			Rev 1: First Draft
		 The smarter choice	

Project: Alperton Residence		
Title: Lighting Control System (LCS) SECOND FLOOR		
Rev: 3	Designed By: DW	Project #: 109
Scale: 1:50 - A2	Date: 26/08/17	No.: 3